

# G4[QR]

## Android Multi-Biometric Facial Recognition Terminal with QR Code Scanner

Compatible with



Compatible with



**G4[QR]** is a multi-biometric identification terminal that features ZKTeco's innovative Enhanced Visible Light Facial Recognition and QR Code Scanning technology. The device with the latest technologies can automatically perform recognition at a distance from 0.5m to 3m when a face is detected. It delivers higher recognition quality in speed and accuracy than other terminals using near-infrared facial recognition technology. With the applied Deep Learning algorithm, pose angle tolerance and anti-spoofing performance have been greatly enhanced against various environment conditions and different types of spoofing attacks.

G4[QR] is equipped with an excellent mini QR code reader, which supports QR code, PDF417, Data Matrix, MicroPDF417, Aztec, and so on. And it can scan the T&A/A&C QR code on the ZKBioSecurity Mobile App.

In addition to the optional ID and IC card modules, G4[QR] can also perfectly support ELATEC card modules, and can support 125kHz, 134.2kHz and 13.56MHz RFID cards without changing the card module.

If the function mentioned above cannot meet customers' needs, we can provide an EDK embedded development kit and adjustment tools. Based on our robust and stable platform, the client's R&D team can quickly develop, integrate, and debug the entire embedded system to get more scalability.

### Features

- Scans the T&A/A&C QR code on the ZKBioSecurity Mobile App
- Supports mask detection.
- Supports Open Supervised Device Protocol (OSDP).
- Anti-spoofing algorithm against print attack (laser, color, and B/W photos), videos attack, and 3D mask attack.
- Supports ELATEC Card Module (125kHz, 134.2kHz, or 13.56MHz RFID cards).
- Supports Android LCDK Demo.

## QR Code Functions

Find the access control QR code on the ZKBioSecurity Mobile App.



Align it with the QR code scanner at the bottom right corner of G4[QR]. The gate will open when verification is successful.

## Specifications (GL Exclusive Feature)

### Capacity

User	10,000
Face	10,000
ID Card	10,000
Transaction	100,000

### Communication

TCP/IP  
USB Host  
Wiegand Input  
Wiegand Output  
Bluetooth, Wi-Fi

### Access Control Interface

Lock Relay Output  
Exit Button  
Alarm Output  
Door Sensor  
External Bell

### Hardware

High-Performance Android Industrial CPU  
2GB DDR3 RAM  
16GB ROM  
7-inch Touch Screen, 1280\*800 Pixels  
2MP Binocular Camera  
ID Card (Standard)  
Supports Android EDK Demo

### Standard Functions

Work Code / Push / DST / Bell Scheduling /  
Automatic Status Switch / Record Query /  
Photo ID

### Special Functions

Enhanced Visible Light Facial Recognition  
Live Face Detection  
Live Fingerprint Detection  
Multiple Biometric Verification Modes

### Optional Functions

13.56MHz IC Card, 125kHz HID Card  
SilkID Fingerprint Sensor, ELATEC Card Module

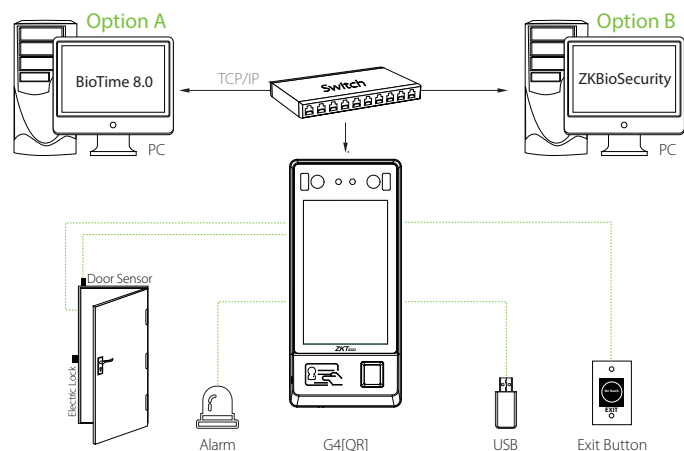
### Compatibility

BioTime 8.0 (Only Time & Attendance Firmware)  
ZKBioSecurity (Only Access Control Firmware)

### Additional Info

Algorithms	ZKFace 5.6 & ZKFinger 10.0
Working Temperature	0°C to 50°C (32°F to 122°F)
Working Humidity	<90%
Dimensions	264mm*120mm*51mm (9.69in*4.72in*2in)
Facial Recognition Speed	≤1s
Facial Recognition Distance	0.5m to 3m (19.7in to 118.1in)
Power	DC12V, 3A

## Configuration



## Dimensions (mm)

