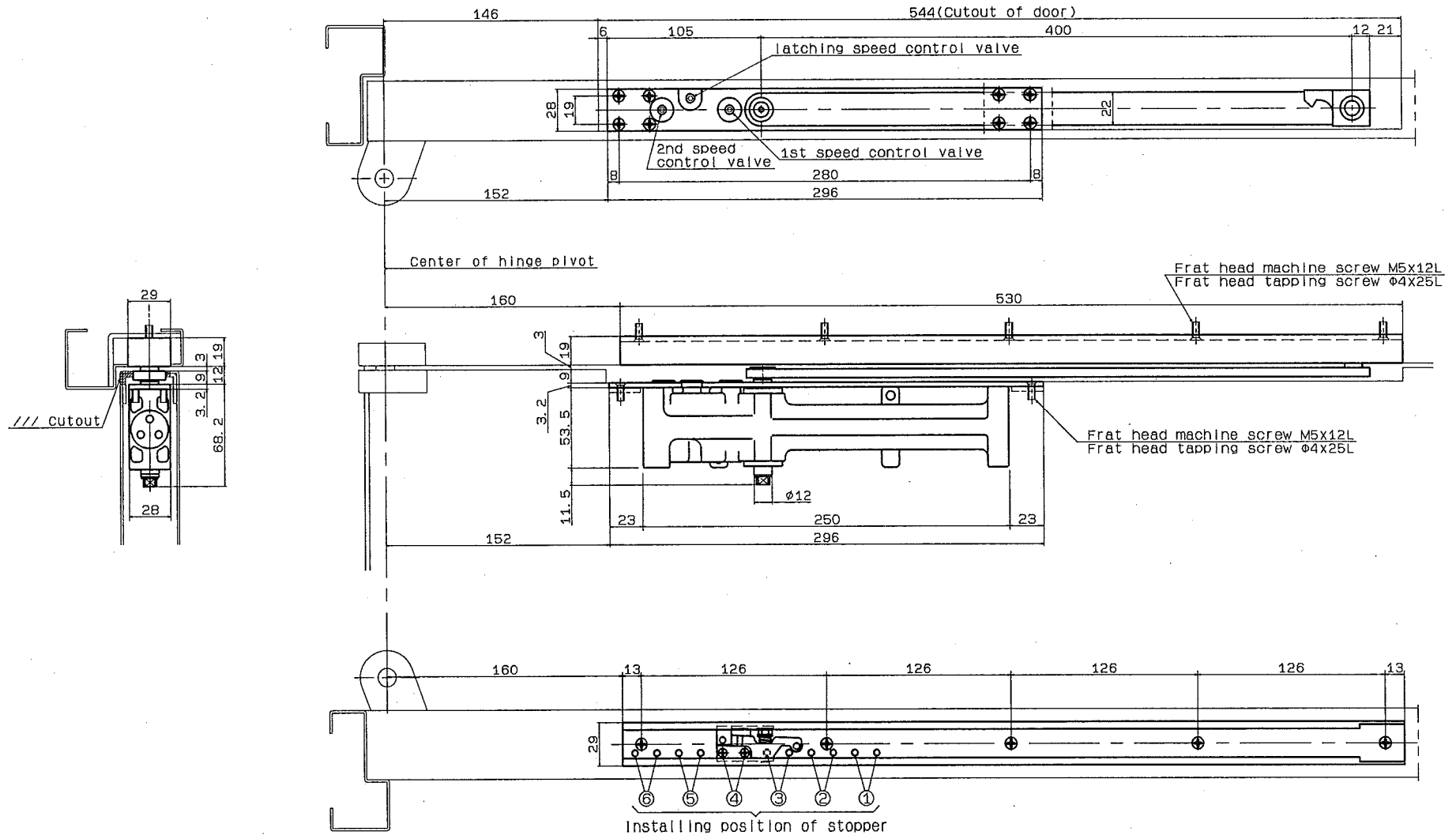


Model No.			Max door dimensions (mm)	Max door weight	Applicable door thickness (mm)		Hold-open device, stopper device installation position	①	②	③	④	⑤	⑥
without hold-open	with hold-open	with Backcheck			Steel door	Wooden door							
COU-52	COU-152	COU-52BC	900X2100	45kg	36	40		76"	81"	86"	91"	97"	104"
COU-53	COU-153	COU-53BC	950X2100	65kg	or more	or more							

● The drawing shows right opening door



RYOBI LIMITED

PRODUCTS

CONCEALED TYPE

APPLICATION

Offset hung(105" opening) · Standard installation

MODEL No.

COU-52, COU-53, COU-152, COU-153

DATE

07/30/2018

REV.