

GV-UNFE2503 2MP H.264 Super Low Lux WDR IR Fisheye Camera



- 1/2.8" progressive scan super low lux CMOS
 - Minimum illumination at 0.02 lux
 - Dual streams from H.264 and MJPEG
 - Up to 30 fps at 1920 x 1080
 - Megapixel lens
 - Day and night function (with removable IR-cut filter)
 - Intelligent IR
 - PoE (IEEE 802.3af)
 - Ingress protection (IP67)
 - Built-in micro SD card slot (SD/SDHC) for local storage
 - One-way audio
 - No mechanical moving parts
 - Provides 360° and 180° panorama view
 - Different angle of view accessible by multiple users at the same time
 - Playback from any view angle and zoom level
 - Digital Object Tracking
 - Virtual PTZ function
 - Auto Pan function
 - 3D noise reduction
 - Wide Dynamic Range (WDR)
 - Defog
 - Motion detection
 - Tampering alarm
 - Privacy mask
 - Text overlay
 - Supports iPhone, iPad, Android & 3GPP
 - 31 languages on Web interface
 - ONVIF (Profile S) conformant
 - Recording assigned by GV-Edge Recording Manager ([Windows](#) & [Mac](#))
 - More storage option - [NAS](#)
- * No Memory card slot & local storage function for Argentina.

Introduction

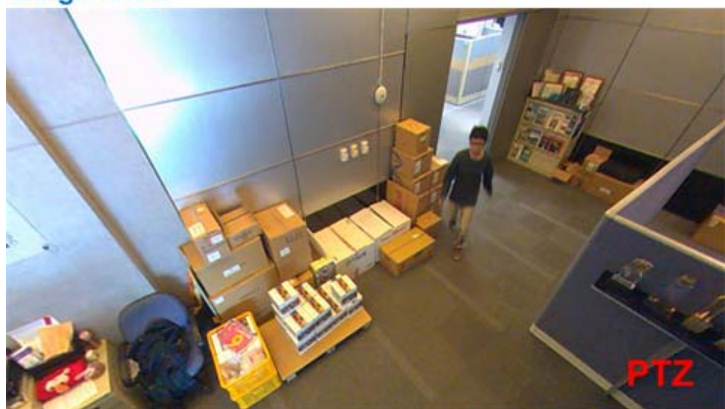
The IR Fisheye Camera is an outdoor fisheye camera that allows you to monitor all angles of a location. The camera is equipped with an IR LED ring that provides infrared illumination under low-light situations. It consists of a main body for processing and a separate camera lens for capturing images. The compact camera lens can be installed in outdoor surveillance sites with limited space.

Photos

Fisheye Source Image



Single View



2 x 180° View



360° View

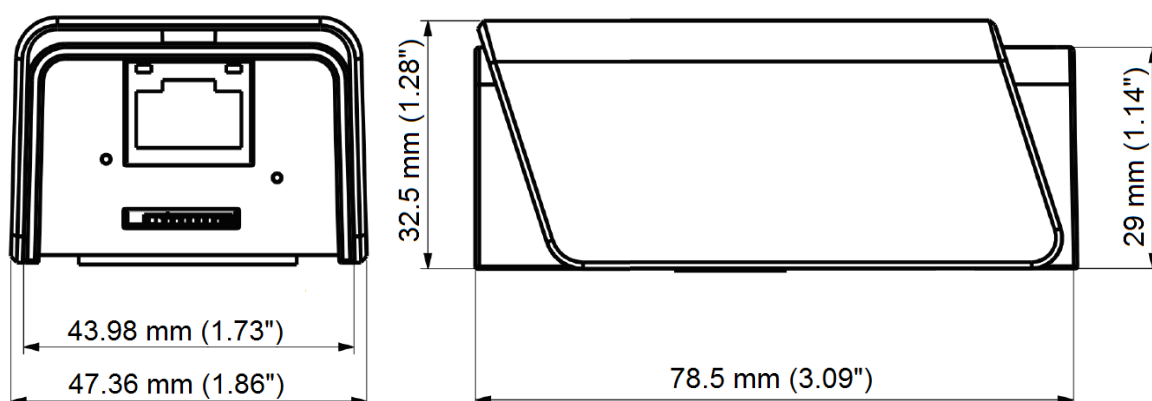


Quad View

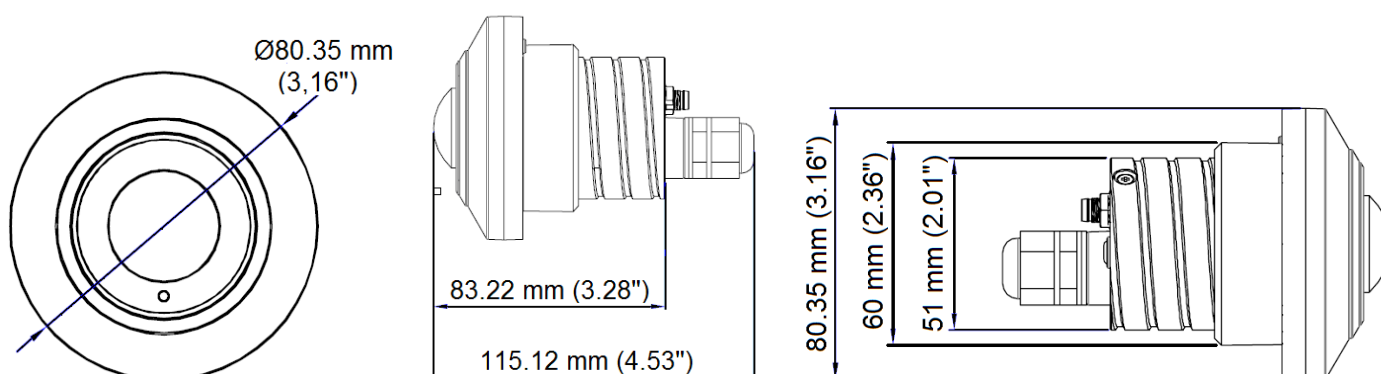


Dimensions

● Camera Body



● Camera Lens



Specifications

Camera		
Image Sensor		1/2.8" progressive scan super low lux CMOS
Picture Elements		1920 (H) x 1080 (V)
Minimum Illumination	Color	0.02 Lux
	B/W	
	IR ON	0
Shutter Speed		Automatic, Manual (1/5 ~ 1/8000 sec.)
White Balance		Automatic, Manual (2800K ~ 8500K)
Gain Control		Automatic
S/N Ratio		52 dB
WDR		Yes
Lens		
Megapixel		Yes
Day/Night		Yes (with removable IR-cut filter)
Iris		Fixed
Focal Length		1.19 mm
Maximum Aperture		F/2.0
Mount		M12
Image Format		1/2.3"
Horizontal FOV		180°
Operation	Focus	Fixed
	Zoom	Fixed
	Iris	Fixed
IR LED Quantity		8 IR LEDs
Max. IR Distance		10 m (35 ft)

Operation

Video Compression	H.264, MJPEG
Video Streaming	Dual streams from H.264 and MJPEG
Frame Rate	30 fps at 1920 x 1080 (60/50 Hz) * The frame rate and the performance may vary depending on the number of connections and data bitrates (different scenes).
Image Setting	Brightness, Contrast, Saturation, Sharpness, Gamma, White Balance, Flicker-less, Image Orientation (Flip, Mirror, 0°, 180°), Shutter Speed, Backlight Compensation, D/N Sensitivity, WDR, Defog, Denoise, Metering
Audio Compression	AAC 32K * This audio codec is for custom procurement; consult our sales representatives before purchasing.
Audio Support	One-Way Audio
Sensor Input	No
Alarm Output	No

Video Resolution

Main Stream	4:3	1600 x 1200 (Default), 1280 x 960
	16:9	1920 x 1080, 1280 x 720
Sub Stream	4:3	640 x 480 (Default)
	16:9	640 x 360

Network

Interface	10/100M Ethernet
Ethernet Protocol	DHCP, DNS, DynDNS, FTP, HTTP, HTTPS, ICMP, IPv4, NTP, ONVIF (Profile S), QoS (DSCP), RTCP, RTSP, SNMP, SMTP, SSL, TCP/IP, UDP, UPnP, 3GPP/ISMA

Mechanical

Temperature Detector		Yes
Connectors	Power	PoE (IEEE 802.3af)
	Ethernet	RJ-45
	Audio	1 In (built-in microphone)
	Local Storage	Micro SD card slot (SD/SDHC, SD version 2.0 only, Class 10) * SDXC and UHS-I card types are not supported.
	Camera Unit Connection	RJ-12
LED Indicator		4 LEDs: Link, ACT, Camera Status, RJ-12 Status

General

Environment Temperature		-5 °C ~50 °C (23 °F ~ 122 °F)
Humidity		10% to 90% (no condensation)
Power Source		PoE (IEEE 802.3af)
Max. Power Consumption		7.7 W
Dimension	Main Body	78.5 x 47.36 x 32.5 mm (3.09" x 1.86" x 1.28")
	Camera Lens	Ø 80.35 x 115.12 mm (3.16" x 4.53")
Cable Length		1 m (3.28 ft)
Weight (with main body mount)		480 g (1.06 lb)
Ingress Protection		IP67
Vandal Resistance		N/A
Regulatory		CE, FCC, RCM, RoHS compliant

Power over Ethernet

PoE Standard	PoE (IEEE 802.3af Power over Ethernet / PD)
PoE Power Supply Type	End-Span
PoE Power Output	Per Port 48V DC, 350mA. Max. 15.4 watts

Web Interface

Installation Management	Web-based configuration
Maintenance	Firmware upgrade through Web Browser or Utility
Access from Web Browser	Camera Live View, Video Recording, Change Video Quality, Bandwidth Control, Image Snapshot, Audio, Picture in Picture, Picture and Picture, Privacy Mask, Tampering Alarm, Text Overlay, Digital PTZ
Language	Arabic / Bulgarian / Czech / Danish / Dutch / English / Finnish / French / German / Greek / Hebrew / Hungarian / Indonesian / Italian / Japanese / Lithuanian / Norwegian / Persian / Polish / Portuguese / Romanian / Russian / Serbian / Simplified Chinese / Slovakian / Slovenian / Spanish / Swedish / Thai / Traditional Chinese / Turkish

Applications

Network Storage	GV-VMS / DVR / NVR, GV-Backup Center, GV-Recording Server, and GV-VMS
Smart Device Access	GV-Eye for iOS and Android
Live Viewing	IE, mobile App
CMS Server support	GV-Control Center, GV-Center V2, GV-Vital Sign Monitor


Note:

- Mind the following when using an inserted memory card for recording:
 - Recorded data on the memory card can be damaged or lost if the data are accessed while the camera is under physical shock, power interruption, memory card detachment or when the memory card reaches the end of its lifespan. No guarantee is provided for such causes.
 - The stored data can be lost if the memory card is not accessed for a long period of time. Back up your data periodically if you seldom access the memory card.
 - Memory cards are expendable and their durability varies according to the conditions of the installed site and how they are used. Back up your data regularly and replace the memory card annually.
 - To avoid power outage, it is highly suggested to apply a battery backup (UPS).
 - For better performance, it is highly suggested to use Micro SD card of MLC NAND flash, Class 10.
 - Replace the memory card when its read/write speed is lower than 6 MB/s or when the memory card is frequently undetected by the camera.
- Specifications are subject to change without notice.

Packing List

- | | |
|----------------------------|-------------------|
| 1. IR Fisheye Camera | 6. M2 Screw |
| 2. Installation Sticker | 7. Warning Label |
| 3. Main Body Mount | 8. Download Guide |
| 4. Main Body Adhesive Tape | 9. Warranty Card |
| 5. M3 Screw x 2 | |

Accessories

Model No.	Details
GV-PA191 	The GV-PA191 PoE adapter is designed to provide power and network connection to the cameras over a single Ethernet cable.
GV-PoE Switch	The GV-PoE Switch is designed to provide power along with network connection for IP devices. The GV-PoE Switch is available in various models with different numbers and types of ports.