

G4[TD]

Android Multi-Biometric Facial Recognition Terminal with Temperature & Mask Detection Module

Compatible with



Compatible with



G4[TD] is a fully upgraded version of the G4 Visible Light Facial Recognition Terminal using intelligent engineering facial recognition algorithms and the latest computer vision technology. It supports speedy facial recognition with large capacity and other authentication methods, including identification with fingerprint, card, and password. G4[TD] also enhances security performance in all aspects.

G4[TD] adopts touchless recognition technology and new functions, namely body temperature detection and masked individual identification. Without requiring physical contact with surfaces that might have contaminated significantly reduces the infection risk. G4[TD] is also equipped with an ultimate anti-spoofing algorithm for facial recognition against almost all types of fake photos and videos attack.

The terminal with temperature and mask detection will be a perfect choice to help reduce the spread of germs and help prevent infections straightly at each access point of any premises and public areas such as hospitals, factories, schools, commercial buildings, stations, through our fast and accurate body temperature measurement and masked individual identification functions.

If the function mentioned above cannot meet customers' needs, we can provide an EDK embedded development kit and adjustment tools. Based on our robust and stable platform, the client's R&D team can quickly develop, integrate, and debug the entire embedded system to get more scalability.

Features



RFID Card
Recognition



Revolutionary SilkID
Fingerprint Sensor



QR Code
Scanning



Temperature
Detection



Mask Detection



Visible Light
Facial Recognition



Android Open
Platform

Body Temperature Detection Specifications

Preventative Measures	Mask detection / Body temperature detection
Temperature Measurement Distance	30 ~ 50cm (1 ~ 1.64ft)
Temperature Measurement Accuracy	±0.3°C (±0.56°F)
Temperature Measurement Range	34 ~ 45°C (93.2 ~ 113°F)

* Facial verification for masked individuals will increase FAR.

* The temperature measurement data is for reference only, and not for any medical purpose.

* G4[TD] is not suitable for intense light and high-temperature environments.

* It is advised to use the product indoor without wind.

Specifications GL Exclusive Feature)

Capacity

User	10,000
Face	10,000
Fingerprint	10,000
ID Card	10,000
Transaction	100,000


Communication

TCP/IP
USB Host
Wiegand Input
Wiegand Output
Bluetooth, WIFI

Access Control Interface

Lock Relay Output
Exit Button
Alarm Output
Door Sensor
External Bell

Hardware

High-Performance Android Industrial CPU
2GB DDR3 RAM
16GB ROM
 QR Code Module
(Optional: SilkID Fingerprint Sensor)
7-inch Touch Screen, 1280*800 Pixels
2MP Binocular Camera

Standard Functions

ID Card / Work Code / Push
DST / Schedule Bell
Automatic Status Switch
Record Query / Photo ID

Special Functions

Enhanced Visible Light Facial Recognition
Live Face Detection
Live Fingerprint Detection
Multiple Biometric Verification Modes

Optional Functions

 13.56MHz IC Card / ICASS Card / HID Card

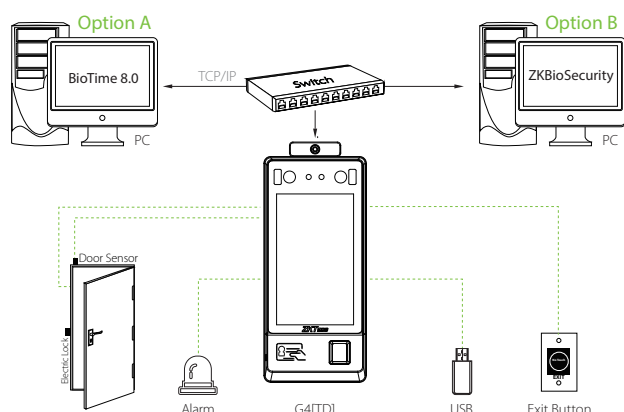
Compatibility

BioTime 8.0 (Only Time & Attendance Firmware)
ZKBioSecurity (Only Access Control Firmware)

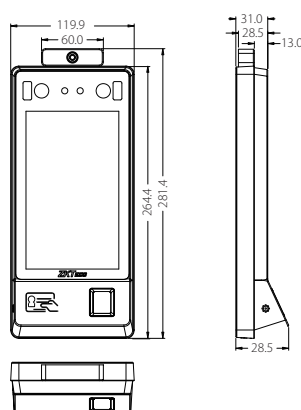
Additional Info

Algorithms	ZKFace5.6 & ZKFinger 10.0
Working Temperature	0°C ~ 50°C (32°F ~ 122°F)
Optimum Operating Temperature	16°C ~ 32°C (60.8°F ~ 89.6°F)
Working Humidity	<90%
Dimensions	246*120*51 mm (9.69*4.72*2 in)
Facial Recognition Speed	≤1s
Facial Recognition Distance	0.5m ~ 3m
Power	DC12V 3A

Configuration



Dimensions (mm)



ZKTECO CO., LTD.

V2.0 2021.03.31

